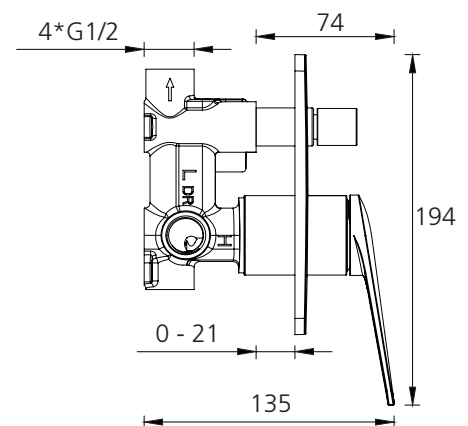
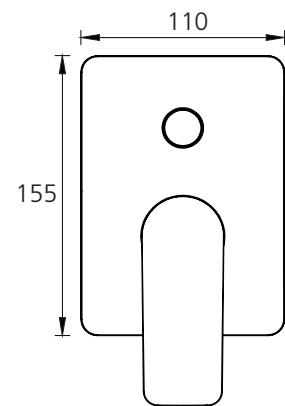
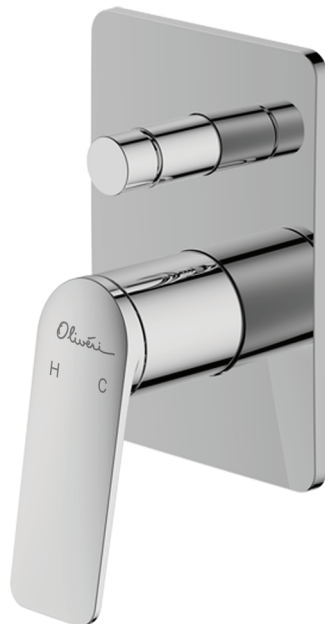


# Paris

**PA101500CR**

Chrome Wall Mixer With Diverter



## Specifications /

<b>WELs rating</b>	NA
<b>Temperature rating (min / max)</b>	1°C - 65°C
<b>Pressure rating (min / max)</b>	150 kPa - 500 kPa
<b>Finish</b>	Chrome (electroplating)
<b>Materials</b>	Brass body and zinc handle
<b>Cartridge size</b>	35mm
<b>Cartridge type</b>	Ceramic disc cartridge
<b>Product weight</b>	1.96kg
<b>Water supply</b>	Mains
<b>Warranty</b>	15 years cartridge, body and finish; 5 years seals, fittings; 1 year labour (refer to <a href="http://oliveri.com.au">oliveri.com.au</a> )
<b>Maintenance and care instructions</b>	All surfaces should be cleaned with mild liquid detergent or soap and water. Do not use cream cleaners or citrus based cleaning products, as they are abrasive. Use of unsuitable cleaning agents may damage the surface. Any damage caused in this way will not be covered by warranty.

All dimensions in mm